

ps:®single-thread

AUTOMATED THREAD FORMING ON TruPunch/TruMatic MACHINE

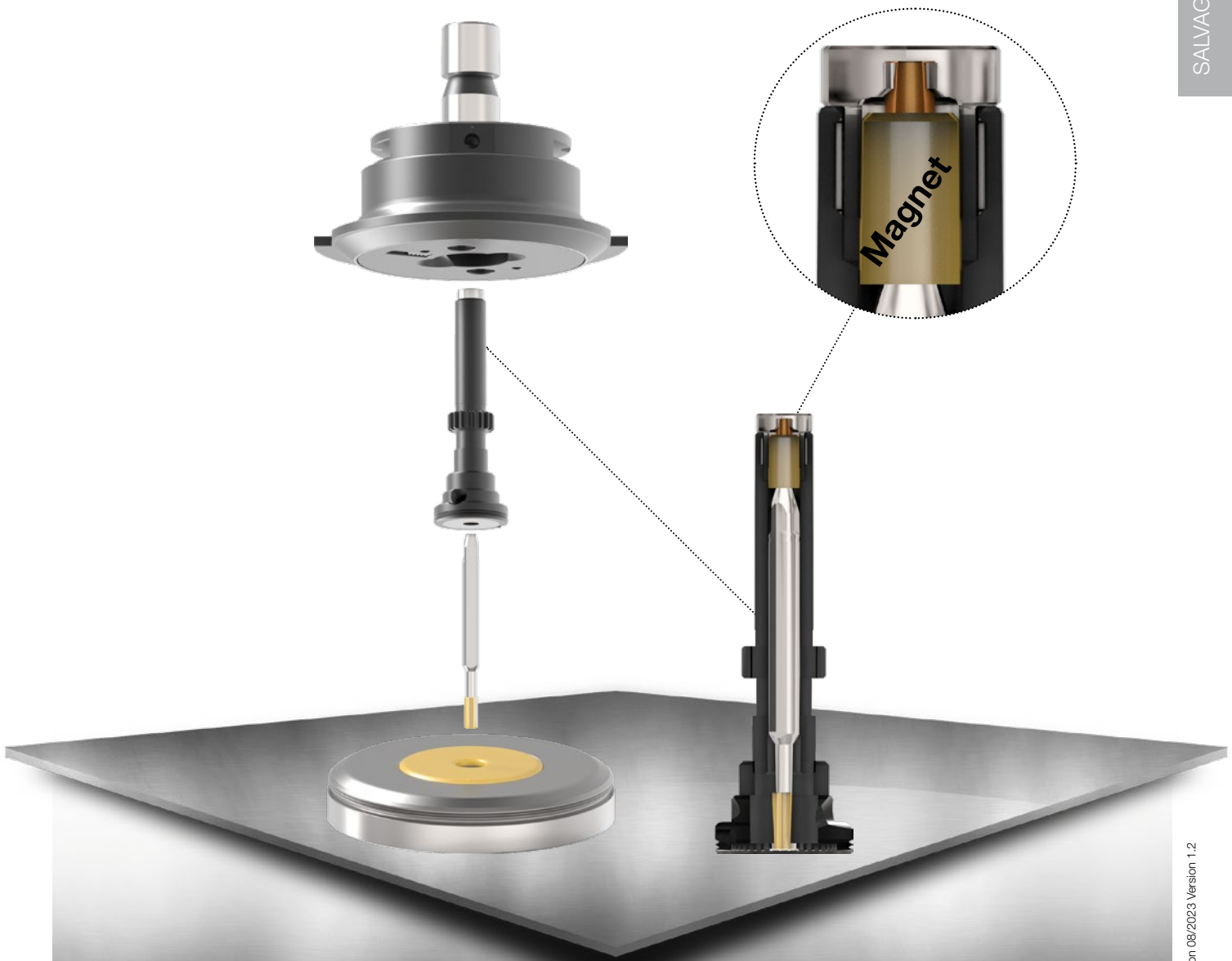
Threads can be found in different areas when products are connected together.

In order to further advance automated thread forming on a TruPunch/TruMatic machine, the tool technology was scrutinized and completed with further effective developments.

The user-friendly technology is based on a further development of the already existing thread forming tool of the tooling system TRUMPF and is available at PASS: our

ps:®single-thread

A magnet in the upper part of the leading spindle ensures a fast and secure fastening of the tap insert without the need for an additional tool.



patented
EP 3,417,970
US 10,940,543

ps:[®]single-thread

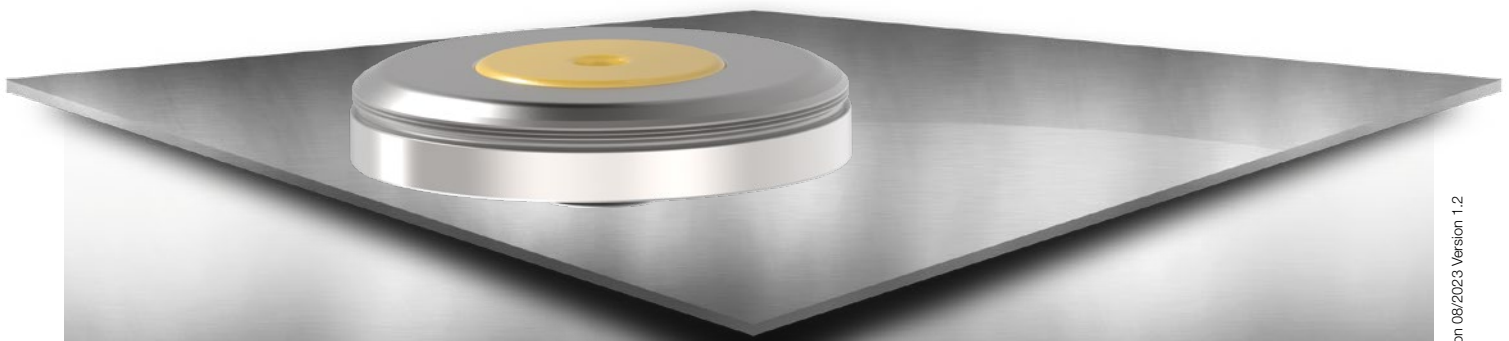
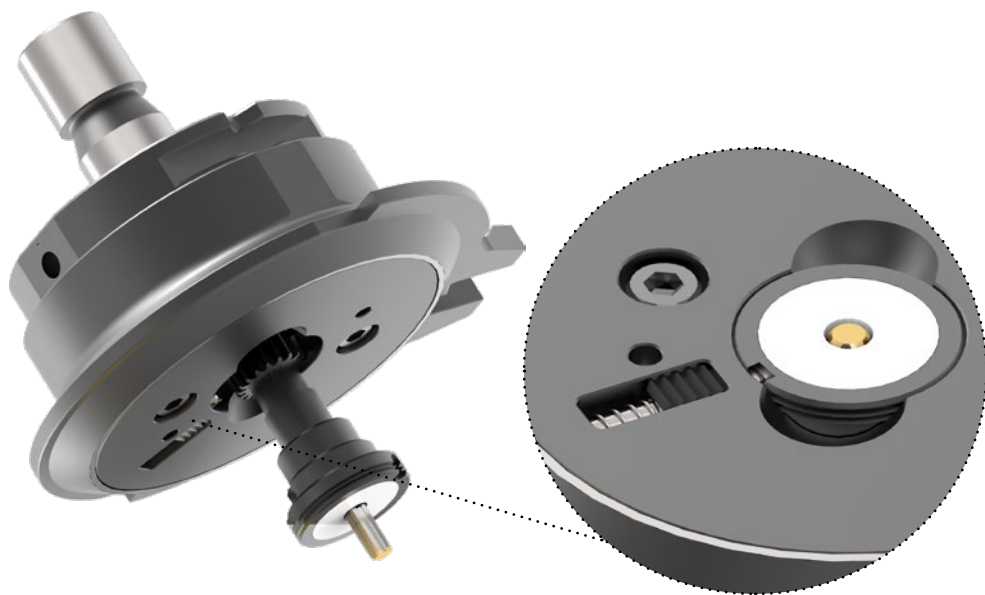
AUTOMATED THREAD FORMING ON TruPunch/TruMatic MACHINE

The thread module is fixed flush by actuating the locking slide. Here also, no additional tools are required to enable a quick tool change.

A decisive focus was placed on the material of the leading screw: instead of "brass", "hardened steel" is now used in order to achieve a longer tool life and thus higher operational safety.

ADVANTAGE:

- max. operating safety by hardened leading screw
- easy handling for assembling and disassembling of thread modules by slide-part system
- best user friendliness by using a holding magnet for the tap inserts
- increased lifetime due to use of H-PM[®] tapping inserts



patented
EP 3,417,970
US 10,940,543