

# ps:<sup>®</sup>assembly-element

FOR MACHINE TYPE THICK TURRET

The PASS assembly sockets - made of plastic material - allow an optimal handling for the assembly and disassembly of tools for the THICK TURRET tooling system.

The stable but light PASS adapter allows an easy assembly and disassembly of the tools from Station A to E without any problems and without lifting heavy assembling kits within a very short time. The inconvenient clamping in a vice is therefore no longer necessary.

PASS also offers the applicable base plate which can easily be fixed with M10 cylinder screws on a work bench.



# ps:<sup>®</sup>assembly-element

AS PLUG SYSTEM

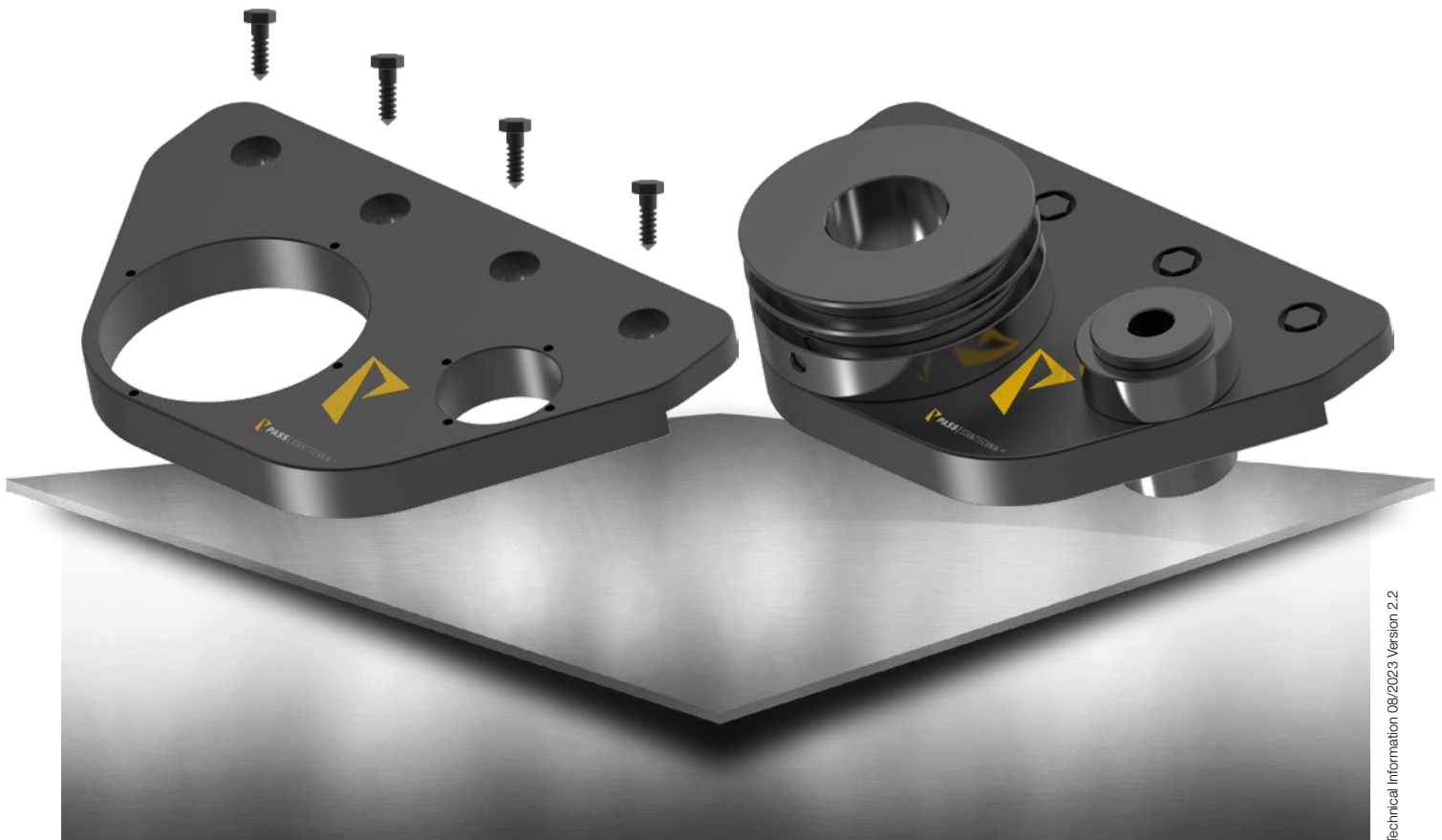
TRUMPF

THICK TURRET

SALVAGNINI

Base plate

Equipped base plate



Technical Information 08/2023 - Version 2.2